

## GPS PLATFORM SERVICES

### DEVICES AND APPLICATIONS



**XT-2150  
Hardwire  
Device**

Fleets and  
Transport Services



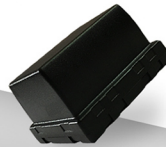
**XT-2000  
Plug In  
Device**

Students and  
Driving Schools



**XT-4550  
Waterproof  
Hardwire**

Detachable  
Trailers



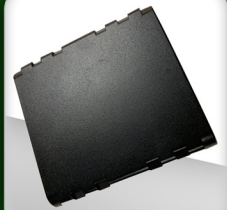
**MA-1080  
Asset  
Tracker**

Theft Prevention  
and Recovery



**Solar  
Power  
Hardwire**

Theft Prevention  
and Recovery



**XT-6300  
Electronic  
Logging Device**

DOT  
Compliance



Track Real-Time



Track History



Geo-Fencing



Maintenance Alerts



Roadside Assistance



Get Alerts



IFTA Fuel Tax Report



3 Year Battery Life



Weather Proof



4G LTE Device





## SERVICES INCLUDE:

- GPS Monitoring System
- ELD Compliant (Beginning February)
- AMEX Fuel Cards (Beginning February)
- Dispatch (Beginning February)
- IFTA Fuel Reports
- Preventative Maintenance Alert System
- Geofence Alert System
- Arrival Tracking System (for clients)
- BLINK On-Call Roadside Assistance
- Centralized Data Storage System

## SERVICE DESCRIPTIONS:

### GPS MONITORING SYSTEM AND HISTORICAL TRAVEL LOG REPORTS-

This comprehensive report is easy to read and includes details such as whether the engine was on or off, latitude and longitude coordinates of the specified event, street address, battery level, speed, mileage, and direction.

### AMEX FUEL CARDS (BEGINNING FEBRUARY)-

You can maximize your savings with your choice of retail and truck stop fuel locations. The card will allow fleet managers to control their company's fuel and maintenance expenses while saving time and money. MaTrack in conjunction with American Express provides your fleet manager with greater trip details including detailed gps data per trip along with the transaction (fuel purchasing) history.

### IFTA FUEL REPORTS-

IFTA fuel tax reports are required for intrastate commercial vehicles. These reports are calculated based on the number of miles driven through each state relative to the amount of fuel purchased per state. Based on our data records, we calculate and provide these reports to you so you don't have to.

### ARRIVAL TRACKING SYSTEM-

We give you a way to provide your clients with the means to track their deliveries in transit! Just let us know you want a tracking link for your customers and we will have you covered.

### PREVENTATIVE MAINTENANCE ALERTS-

We give you a way to provide your clients with the means to track their deliveries in transit! Just let us know you want a tracking link for your customers and we will have you covered.

### GEOFENCE ALERTS

Set your system to alert you anytime a vehicle maintenance is needed! (Eg. Tire rotations, Oil changes, Etc.)

### BLINK ON-CALL ROADSIDE ASSISTANCE-(40% Off Local Rates)

With having earned the trust of over 75 million drivers nationwide, BLINK Roadside is a Leading force in the roadside service industry. Unsurpassed and with seasoned expertise, BLINK handles over 10 million roadside events each year.

